

# Uptown Community Parking District Comprehensive Parking Management Strategies



## **Part Four & Five**

### **How Do We Know What to Do Where?**

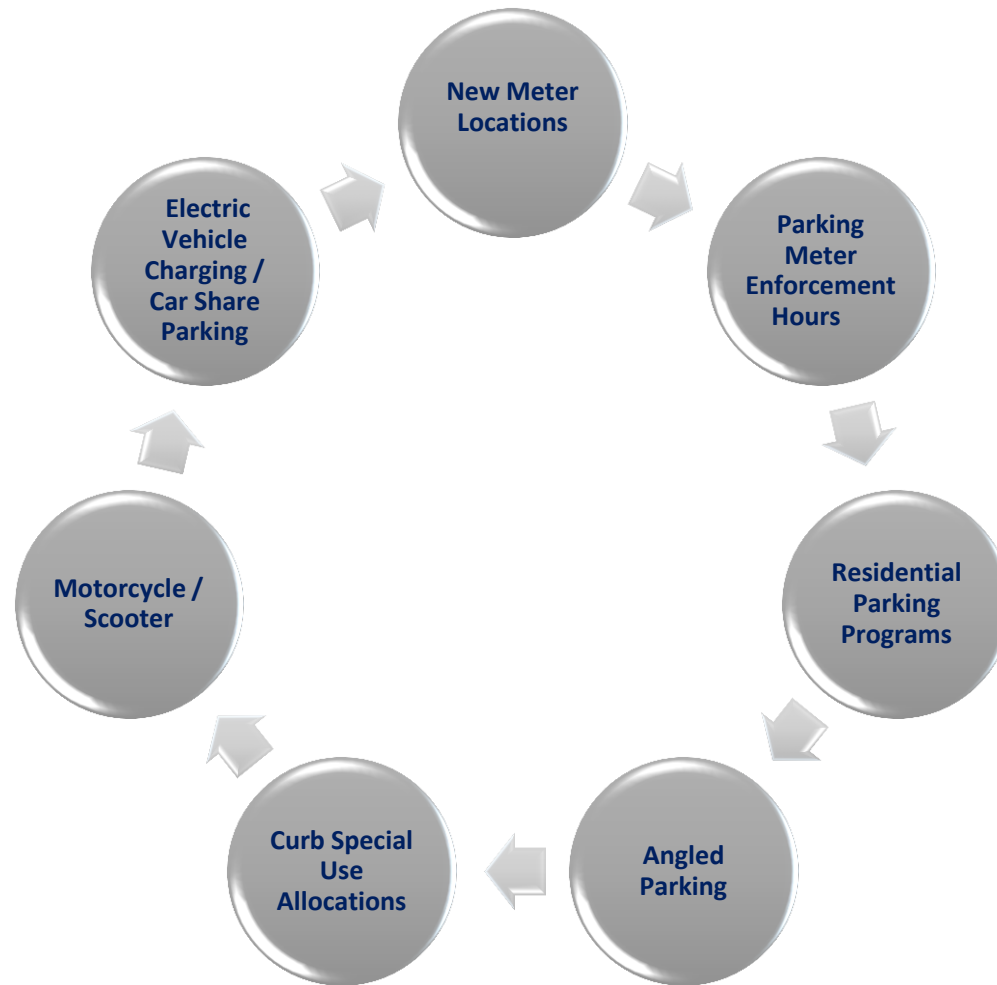
### **Implementation Strategies & Recommendations**

### **UPCD Staff Summary**

**March 2017**

# Toolbox Recommendations

**March of 2017, the Uptown Parking District prepares for implementation of major comprehensive strategies including:**



# Goals & Concepts to Support Recommended Strategies

**Support neighborhood business districts by making on-street parking available**

**Lack of Turnover**

**Provide adequate turnover of on-street parking spaces**

**Over Supplied - Underutilized**

**Impacts on community livability, economic vitality and equity of access**

**Public Outreach & Input**

**Including Uptown Planners**

**Meet the needs of the variety of parking time-limit needs**

**Make efficient use of off-street parking facilities**

**Validation Programs**

**Wayfinding Program**

**Encourage use of transit, biking and walking**

# Uptown Public Parking Supply Management Plan

Cleanup Parking Supply

Adjust Meter Pricing

Additional Improvements

## Hillcrest

Implement meters on University Ave east of 10<sup>th</sup> Ave and on 7<sup>th</sup> Avenue south of University Ave.

Change enforcement hours to 10am to 8pm.

Adjust meter price points to achieve 85% occupancy target. Set separate meter rates for different areas.

Look for opportunities to increase public parking supply

## Bankers Hill

Implement time limited parking zones in the area between 3<sup>rd</sup> Ave & 6<sup>th</sup> Ave & between Upas St and Elm St.

Implement meters in the area between 3<sup>rd</sup> Ave & 6<sup>th</sup> Ave & between Upas St and Elm St.

Adjust meter price points to achive 85% occupancy target.

Implement Residential Parking Program

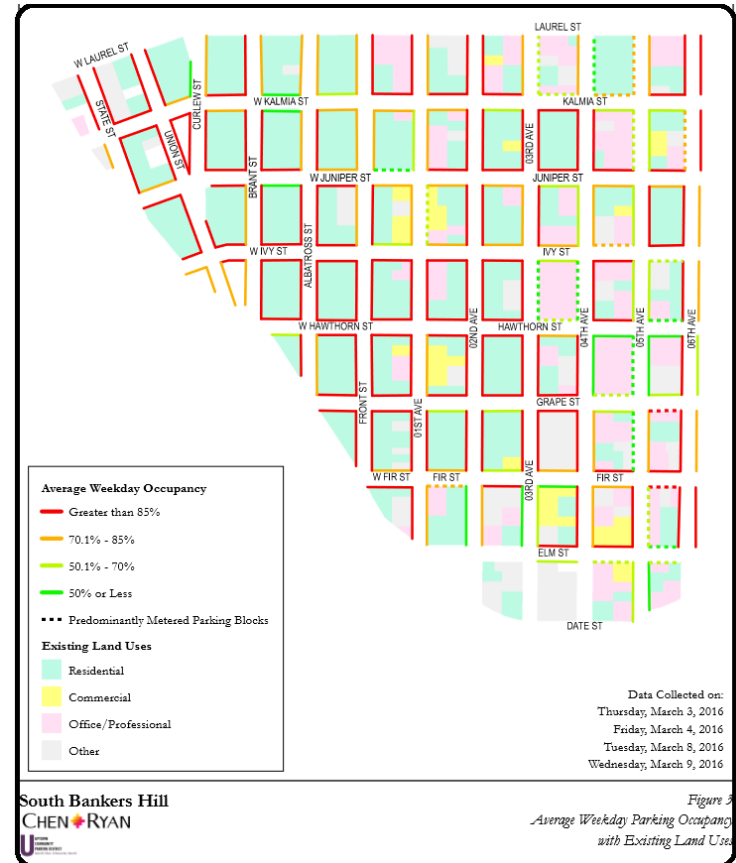
# Comprehensive Parking Management Strategies

The UCPD conducted extensive parking occupancy and duration counts documenting the on-street parking supply and demands, meter locations, time-limited parking and land uses in order to recommend changes to parking enforcement and enhance supply.

## What has been documented\*

- Meter locations
- Time-limited parking locations
- Parking occupancy counts
- Parking duration counts
- Land use
- Meter utilization
- Meter usage by time of day
- Yellow/green/white/blue curb locations
- Residential parking permit programs
- New meter locations
- Angled parking

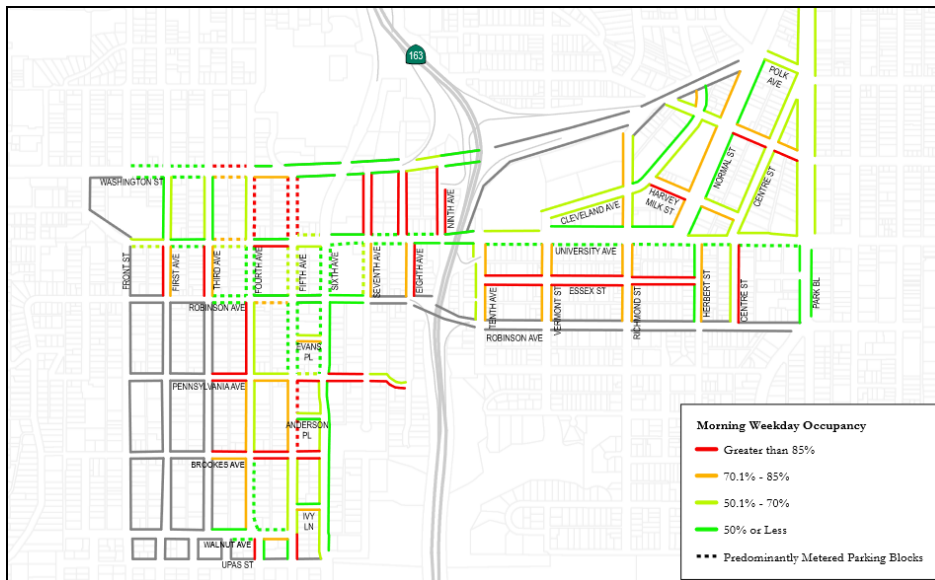
\*complete study results, maps and figures can be found in a separate report, Comprehensive Parking Management Strategies published by UCPD staff



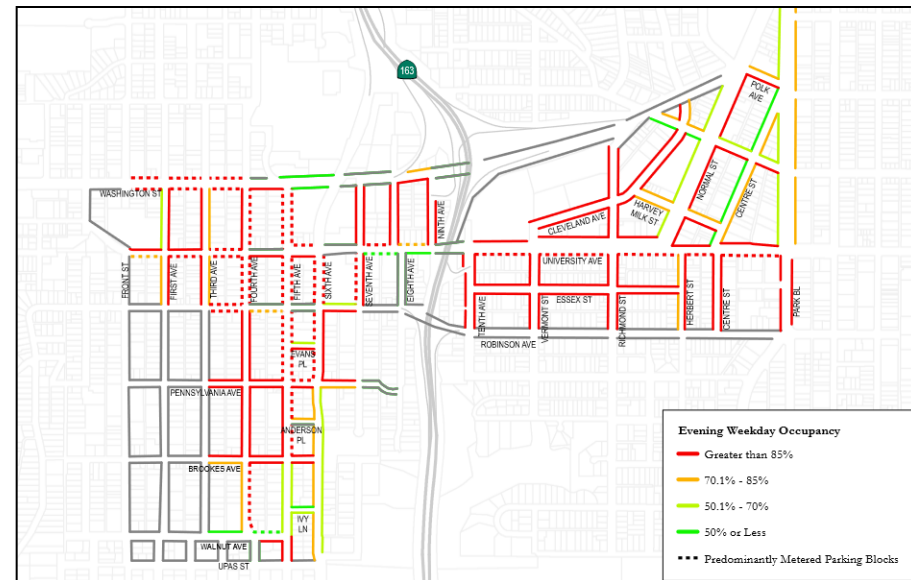
# Comprehensive Parking Management Strategies

## Modify Enforcement Hours – Hillcrest Shifts Enforcement to 10:00 AM – 8:00 PM

- Parking in Hillcrest is severely impacted in the evening hours with patrons struggling to find on-street parking availability.
- The UCPD recommended the change in enforcement hours to encourage greater turn over of on-street parking while providing free parking in the morning hours.
- The change is expected to be implemented in the spring of 2017.



Parking occupancy and duration studies, document that on-street parking occupancy in Hillcrest averages well below 70% in the morning hours.



Parking occupancy and duration studies document that on-street parking occupancy in the evening is much greater than 85% occupied on average in the evenings.

# Comprehensive Parking Management Strategies

Reconfigure existing on-street parking

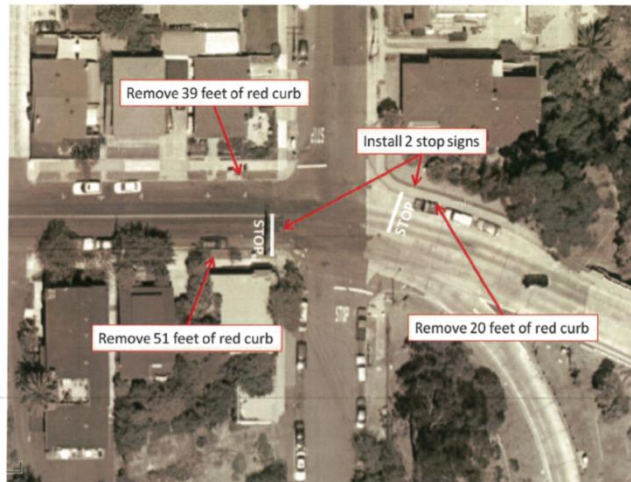
Repurpose curb uses – shared use curbs

- ✓ 28 stalls repurposed with parking curb color changes
  - ✓ 16 parking gains with angled parking initiatives
  - ✓ 5 new parking stalls with stop sign implementation
    - ✓ 11 new motorcycle parking stalls
    - ✓ 2 new ADA parking stalls

8<sup>th</sup> Avenue & Robinson Avenue – All Way Stop

PROPOSED CHANGES

- Install 2 new stop signs/pavement markings (making intersection an all-way stop)
- Remove 110 feet of red curb – Increase of 5 parking spaces



Winder Street Angled Initiative – Four On-Street Gains





# Comprehensive Parking Management Strategies

## Parking Meter Installations & Time Limited Parking

Parking duration studies indicate low turnover of parking spaces in three un-metered, un-restricted blocks.

The UCPD recommended meter installations:

- 422-510 West Washington Street
- 1000 Block University Avenue
- 1700 Block University Avenue

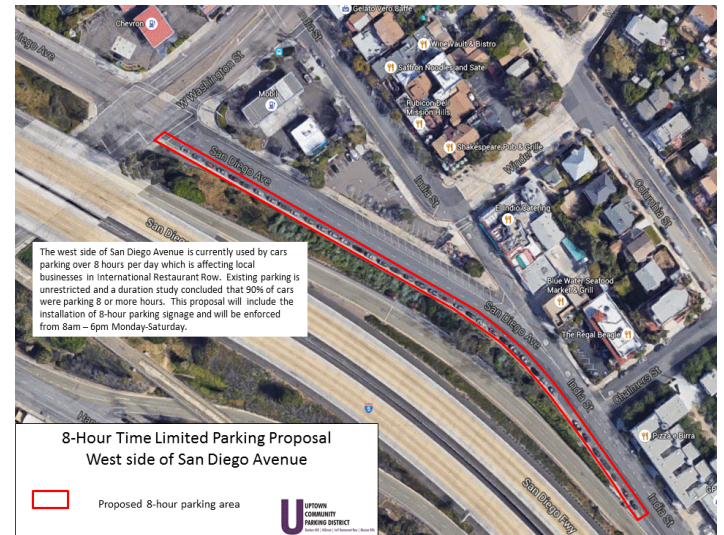
Installation of meters is expected in spring 2017

**International Restaurant Row** studies found cars parking for longer than 8-hours (likely airport parkers) and instituted an 8-hour time limit on San Diego Avenue. This has been a positive impact for the business community.

**Request to Install Parking Meters**  
University, north side, between 10<sup>th</sup> – Vermont  
10 meters total



**422-510 West Washington** - no signs or meters (approximately 8 stalls)  
Fronting property use – commercial  
Average duration is 3.33 hours  
**Recommendation for meter installations**





# Comprehensive Parking Management Strategies

## Angle Parking Initiatives

- In 2015 the UCPD submitted to the City, plans to implement 481 new on-street parking stalls by angling the stalls .
- As of February 2017 only 16 gains have been realized.
- City CPD staff to complete assessments and diagrams.
- In Bankers Hills 22 blocks are being considered as part of the off-set for parking losses due to the SANDAG bikeway project, these assessments, designs, and public notifications have yet to be completed by the City CPD staff.

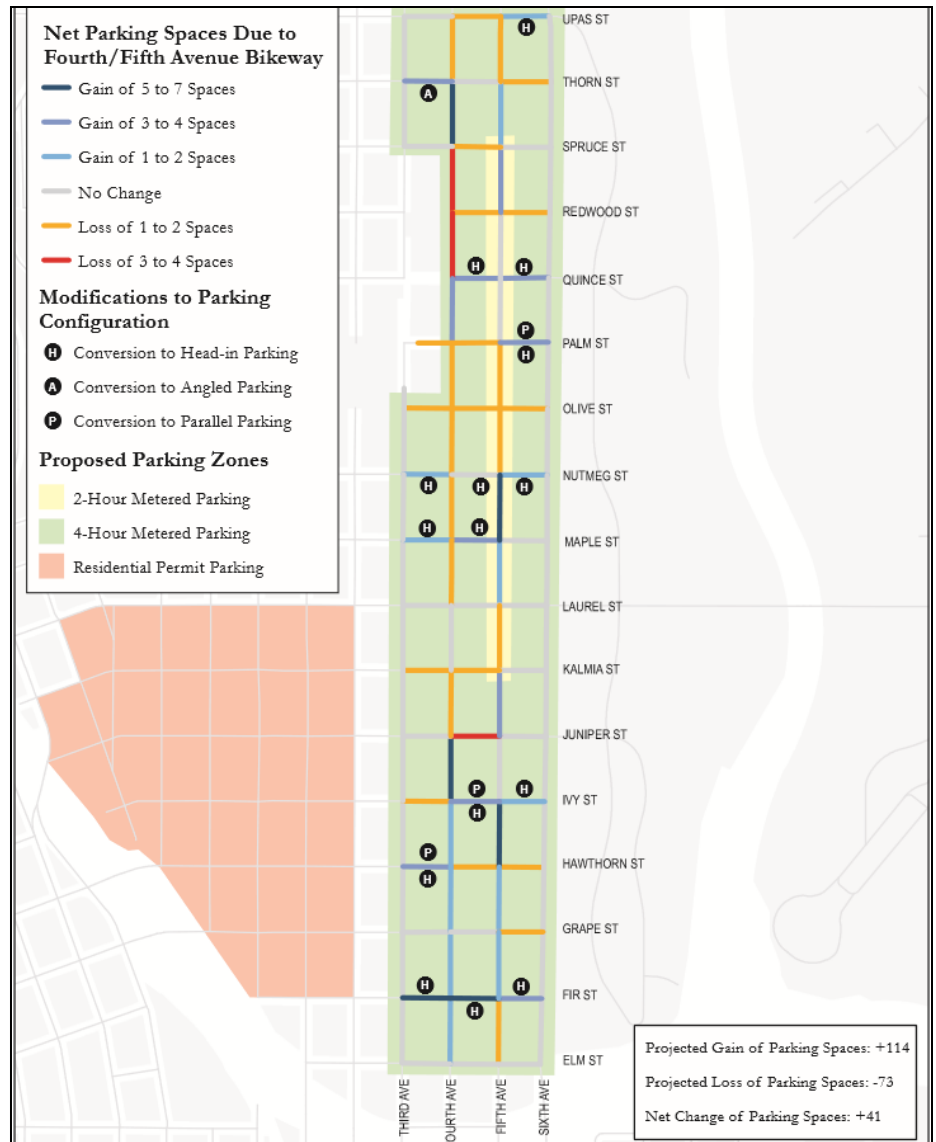


# Comprehensive Parking Management Strategies

Bankers Hill has a number of initiatives being recommended upon review of the parking occupancy and duration studies:

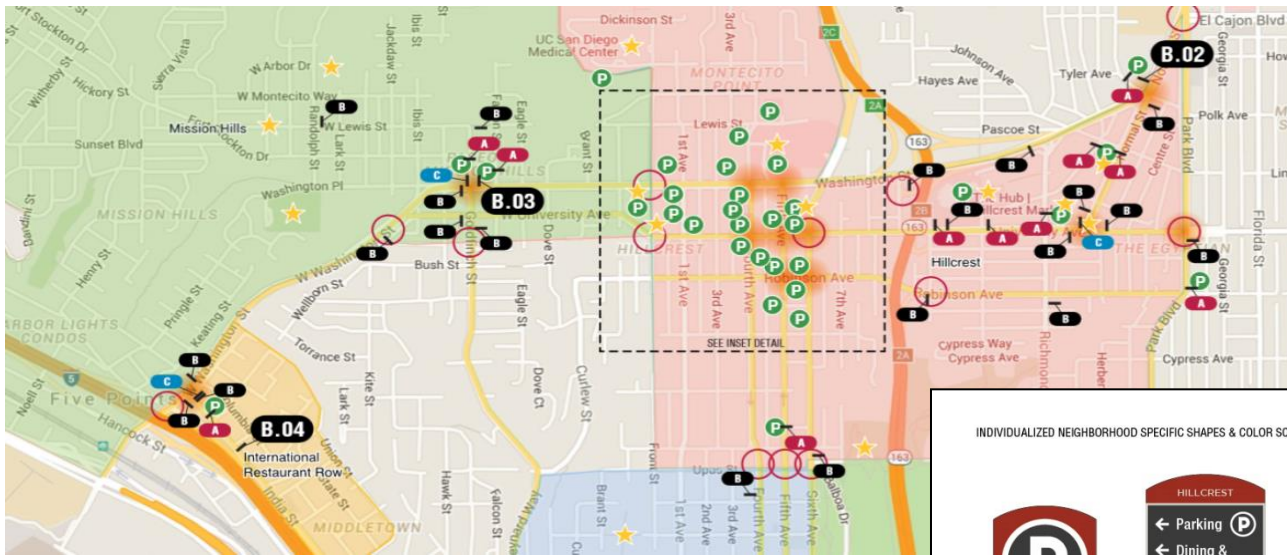
- SANDAG Angled Parking Initiative
- UCPD Angled Parking Initiative
- 2 & 4 Hour Parking Time Limit Zones
- White & Green Curb Implementation
- Residential Permit Parking (SW region)

Surveys and Public Input Expected in Summer of 2017 before recommendations for implementation are considered



# Wayfinding System

- A district-wide community stakeholder group formed to select a design and potential locations for a wayfinding system in uptown.
- The scoping phase (I )of this project cost \$9,950.00.
- Phases II and III are expected to take place in 2017.



## **Toolbox Part II –**

- Parking Meter Rates
- Parking Lots & Structures
- Employee Parking Solutions
- **Other Influences on Parking**
  - Car-share / Ride-hailing Programs, Taxis and Valets
  - Bikes
  - Bike-share Programs; Bike Lanes; Bike Parking
  - Mass Transit – MTS bus
  - Walking
  - Special Event Parking Impacts and Needs
  - Real-time Information – Parking Guidance Systems